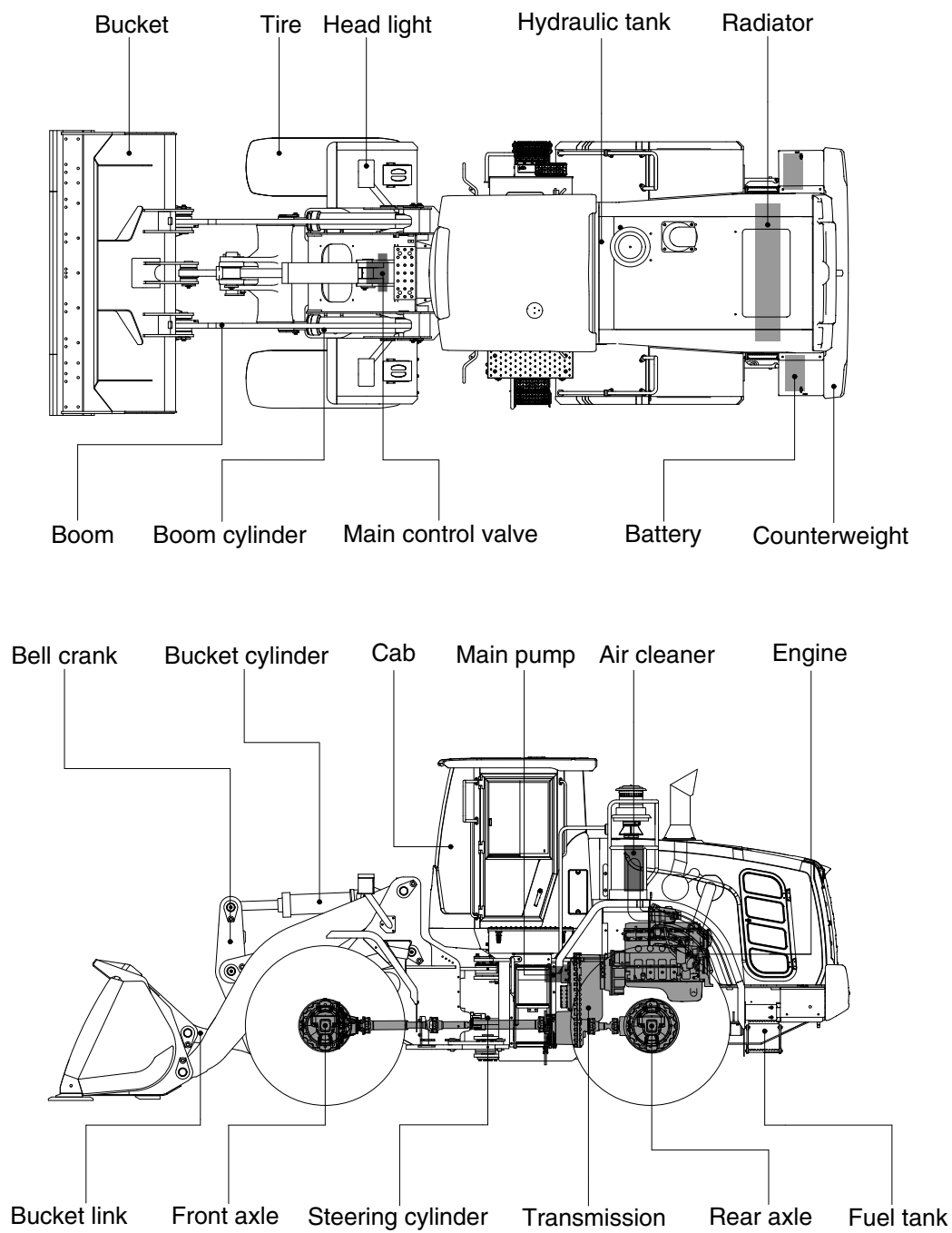


2. SPECIFICATIONS

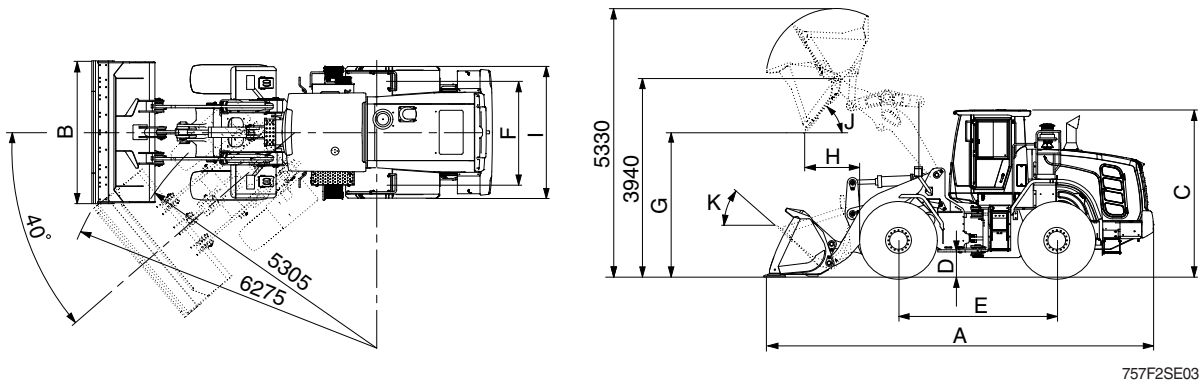
1. MAJOR COMPONENTS



760F2SE01

2. SPECIFICATIONS

1) WITH BOLT-ON CUTTING EDGE TYPE BUCKET (HL955A / HL955A HD))

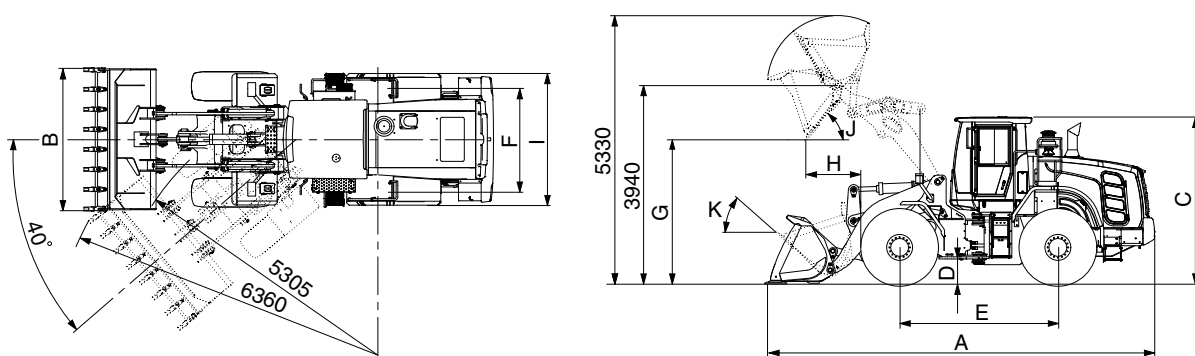


757F2SE03

Description			Unit	Specification
Operating weight (HL955A / HL955A HD)			kg (lb)	15800 (34830) / 15980 (35230)
Bucket capacity	Struck		m³ (yd³)	2.4 (3.1)
	Heaped			2.8 (3.7)
Overall length	A		mm (ft-in)	7715 (25' 4")
Overall width	B			2740 (9' 0")
Overall height	C			3390 (11' 1")
Ground clearance	D			410 (1' 4")
Wheelbase	E			3050 (10' 0")
Tread	F			2010(6' 7")
Dump clearance at 45°	G			2785 (9' 2")
Dump reach (full lift)	H			1180 (3' 10")
Width over tires	I			2530 (8' 4")
Dump angle	J			degree (°)
Rollback angle (carry position)	K		46	
Cycle time	Lift (with load)		sec	5.5
	Dump (with load)			1.8
	Lower (empty)			3.9
Maximum travel speed			km/hr (mph)	39.2 (24.4)
Braking distance			m (ft-in)	13.3 (43' 8")
Minimum turning radius (center of outside tire)				5.3 (17' 5")
Gradeability			degree (°)	30
Breakout force			kg (lb)	14370 (31680)
Travel speed	Forward	First gear	km/hr (mph)	7.1 (4.4)
		Second gear		11.7 (7.3)
		Third gear		23.6 (14.7)
		Fourth gear		39.2 (24.4)
	Reverse	First gear		7.4 (4.6)
		Second gear		12.3 (7.6)
		Third gear		24.9 (15.5)

Description			Unit	Specification	
Operating weight (HL955A XT / HL955A HD XT)			kg (lb)	16490 (36350) / 16670 (36755)	
Bucket capacity		Struck	m³ (yd³)	2.4 (3.1)	
		Heaped		2.8 (3.7)	
Overall length		A	mm (ft-in)	8310 (27' 3")	
Overall width		B		2740 (9' 0")	
Overall height		C		3390 (11' 1")	
Ground clearance		D		410 (1' 4")	
Wheelbase		E		3050 (10' 0")	
Tread		F		2010 (6' 7")	
Dump clearance at 45°		G		3360 (11' 0")	
Dump reach (full lift)		H		1220 (4' 0")	
Width over tires		I		2530 (8' 4")	
Dump angle		J		degree (°)	48
Rollback angle (carry position)		K			47
Cycle time		Lift (with load)	sec	5.5	
		Dump (with load)		1.6	
		Lower (empty)		3.9	
Maximum travel speed			km/hr (mph)	38.9 (24.2)	
Braking distance			m (ft-in)	13.3 (43' 8")	
Minimum turning radius (center of outside tire)				5.3 (17' 5")	
Gradeability			degree (°)	30	
Breakout force			kg (lb)	14540 (32055)	
Travel speed	Forward	First gear	km/hr (mph)	7.1 (4.4)	
		Second gear		11.7 (7.3)	
		Third gear		23.6 (14.7)	
		Fourth gear		38.9 (24.2)	
	Reverse	First gear		7.4 (4.6)	
		Second gear		12.3 (7.6)	
		Third gear		24.8 (15.4)	

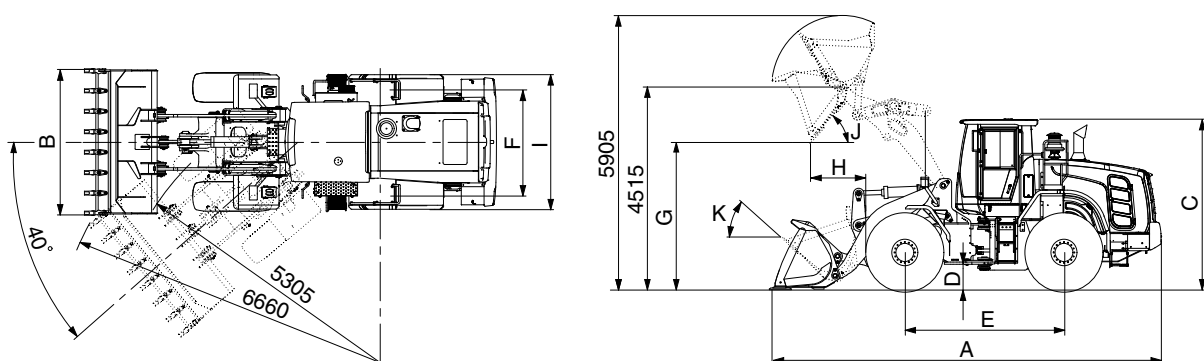
2) WITH 2-TOOTH TYPE BUCKET (HL955A)



757F2SE02

Description			Unit	Specification
Operating weight			kg (lb)	15855 (34950)
Bucket capacity	Struck		m³ (yd³)	2.4 (3.1)
	Heaped			2.8 (3.7)
Overall length	A		mm (ft-in)	7870 (25' 10")
Overall width	B			2810 (9' 3")
Overall height	C			3390 (11' 1")
Ground clearance	D			410 (1' 4")
Wheelbase	E			3050 (10' 0")
Tread	F			2010 (6' 7")
Dump clearance at 45°	G			2660 (8' 9")
Dump reach (full lift)	H			1275 (4' 2")
Width over tires	I			2530 (8' 4")
Dump angle	J			degree (°)
Rollback angle (carry position)	K		46	
Cycle time	Lift (with load)		sec	5.5
	Dump (with load)			1.8
	Lower (empty)			3.9
Maximum travel speed			km/hr (mph)	39.2 (24.4)
Braking distance			m (ft-in)	12.3 (43' 8")
Minimum turning radius (center of outside tire)				5.3 (17' 5")
Gradeability			degree (°)	30
Breakout force			kg (lb)	14370 (31680)
Travel speed	Forward	First gear	km/hr (mph)	7.1 (4.4)
		Second gear		11.7 (7.3)
		Third gear		23.6 (14.7)
		Fourth gear		39.2 (24.4)
	Reverse	First gear		7.4 (4.6)
		Second gear		12.3 (7.6)
		Third gear		24.9 (15.5)

WITH 2-TOOTH TYPE BUCKET (HL955A XT)



757F2SE02-2

Description			Unit	Specification
Operating weight			kg (lb)	16545 (36475)
Bucket capacity	Struck		m³ (yd³)	2.4 (3.1)
	Heaped			2.8 (3.7)
Overall length	A		mm (ft-in)	8465 (18662)
Overall width	B			2810 (9' 3")
Overall height	C			3390 (11' 1")
Ground clearance	D			410 (1' 4")
Wheelbase	E			3050 (10' 0")
Tread	F			2010 (6' 7")
Dump clearance at 45°	G			3235 (10' 7")
Dump reach (full lift)	H			1315 (4' 4")
Width over tires	I			2530 (8' 4")
Dump angle	J			degree (°)
Rollback angle (carry position)	K		47	
Cycle time	Lift (with load)		sec	5.5
	Dump (with load)			1.6
	Lower (empty)			3.9
Maximum travel speed			km/hr (mph)	38.9 (24.2)
Braking distance			m (ft-in)	13.3 (43' 8")
Minimum turning radius (center of outside tire)				5.3 (17' 5")
Gradeability			degree (°)	30
Breakout force			kg (lb)	14540 (32055)
Travel speed	Forward	First gear	km/hr (mph)	7.1 (4.4)
		Second gear		11.7 (7.3)
		Third gear		23.6 (14.7)
		Fourth gear		38.9 (24.2)
	Reverse	First gear		7.4 (4.6)
		Second gear		12.3 (7.6)
		Third gear		24.8 (15.4)

3. WEIGHT

Item		kg	lb
Front frame assembly		1232	2716
Rear frame assembly		1652	3642
Front fender (LH & RH)		61	134
Counterweight	HL955A	548	1208
	HL955A XT	965	2127
Cab assembly		879	1938
Engine assembly		599	1320
Transmission assembly (4-speed/5-speed)		520/560	1146/1234
Driveshaft (front)		34	74
Driveshaft (center)		23	50
Driveshaft (rear)		12	26
Front axle (include differential)		1020	2250
Front axle (include differential, HL955A HD, HL955A HD XT)		1200	2650
Rear axle (include differential)		1020	2250
Tire (20.5 R25, ★★, L3)		238	524
Hydraulic tank assembly		277	610
Fuel tank assembly		291	641
Main pump assembly		53	116
Fan & brake pump assembly		12	26
Main control valve (2-spool/3-spool)		90/106	198/233
Steering valve (Priority valve)		6	13
Boom assembly	HL955A	965	2127
	HL955A XT	1350	2976
Bell crank assembly		326	718
Bucket link		46	101
2.8 m³ bucket, with bolt on cutting edge		1245	2744
2.8 m³ bucket, with 2-tooth		1295	2854
Boom cylinder assembly		111	244
Bucket cylinder assembly (XT)		112(112)	246(246)
Steering cylinder assembly		25	55
Seat		70	154
Battery		90	198

4. SPECIFICATION FOR MAJOR COMPONENTS

1) ENGINE

Item	Specification
Model	Cummins B6.7
Type	4-cycle turbocharged and charge air-cooled diesel engine
Control type	Electronic control
Cooling method	Water cooling
Number of cylinders and arrangement	6 cylinders, in-line
Firing order	1-5-3-6-2-4
Combustion chamber type	Direct injection type
Cylinder bore × stroke	107 × 124 mm (4.2" × 4.9")
Piston displacement	6700 cc (408 cu in)
Compression ratio	17.3 : 1
Rated horse power (Gross)	200 hp at 2200 rpm
Maximum torque at 1300 rpm	101 kgf·m (730 lbf·ft)
Engine oil quantity	18ℓ (4.8 U.S. gal)
Wet weight	538 kg(1285 lb)
High idling speed	2230 ± 50 rpm
Low idling speed	800 ± 25 rpm
Rated fuel consumption	208 g/kW·hr
Starting motor	Melco 90P , 24V-5.5kW
Alternator	Denso , 24V-95A
Battery	2 × 12V × 160Ah

2) MAIN PUMP

Item	Specification
Type	Variable piston pump
Capacity	100 cc/rev
Maximum operating pressure	280 kgf/cm ² (3980 psi)
Rated oil quantity (at 2200 rpm)	220 ℓ/min (58.1 U.S.gpm / 48.4 U.K.gpm)
Maximum speed	2230 rpm

3) FAN AND BRAKE PUMP

Item	Specification
Type	Variable piston pump
Capacity	28 cc/rev
Maximum operating pressure	250 kgf/cm ² (3560 psi)
Rated oil quantity (at 2200 rpm)	62ℓ/min (16.3 U.S.gpm)
Maximum speed	2230 rpm

4) MAIN CONTROL VALVE

Item	Specification
Type	2 spool & 3spool
Operating method	Hydraulic pilot assist
System pressure	280 kgf/cm ² (3980 psi)
Overload relief valve pressure	340 kgf/cm ² (4840 psi)

* : Bucket dump

5) REMOTE CONTROL VALVE (EH TYPE)

Item	Specification
Type	Fingertip
Axle	Single axle for boom, bucket, auxiliary
Operating voltage	4.5~5.5 V
Output signal	0.5~4.5 V (neutral 2.5 V)

6) CYLINDER

Item		Specification
Boom cylinder	Bore dia×Rod dia×Stroke	Ø125×Ø70×745 mm
Bucket cylinder (HL955A)	Bore dia×Rod dia×Stroke	Ø140×Ø75×560 mm
Bucket cylinder (HL955A XT)	Bore dia×Rod dia×Stroke	Ø140×Ø75×585 mm
Steering cylinder	Bore dia×Rod dia×Stroke	Ø 70×Ø45×418 mm

(XT)

7) DYNAMIC POWER TRANSMISSION DEVICES

Item			Specification
4-speed transmission (std)	Model		ZF 4WG 190
	Type	Converter	Single-stage, single-phase
		Transmission	Full-automatic power shift
	Gear shift		Forward fourth gear, reverse third gear
	Control		Electrical single lever type, kick-down system
	Travel speed		See the page 2-2.
5-speed transmission (opt)	Model		ZF 5WG210
	Type	Converter	Single-stage, double-phase (with lock up clutch)
		Transmission	Full-automatic power shift
	Gear shift		Forward fifth gear, reverse third gear
	Control		Electrical single lever type, kick-down system
	Travel speed	Forward 1/2/3/4/5	6.5/11.4/17.6/27.3/40.0 km/hr
		Reverse 1/2/3	6.9/12.0/28.8 km/hr
Axle	Drive devices		4-wheel drive
	Front		Front fixed location
	Rear		Oscillation $\pm 11^\circ$ of center pin-loaded
Wheels	Tires		20.5 R25, ★★, L3
Brakes	Travel		Four-wheel, wet-disc type, full hydraulic
	Parking		Spring applied, hydraulic released brake on transmission
Steering	Type		Full hydraulic, articulated
	Steering angle		40° to both right and left angle, respectively
	Relief pressure		210 kgf/cm ² (2990 psi)